

Installation for SQL Account

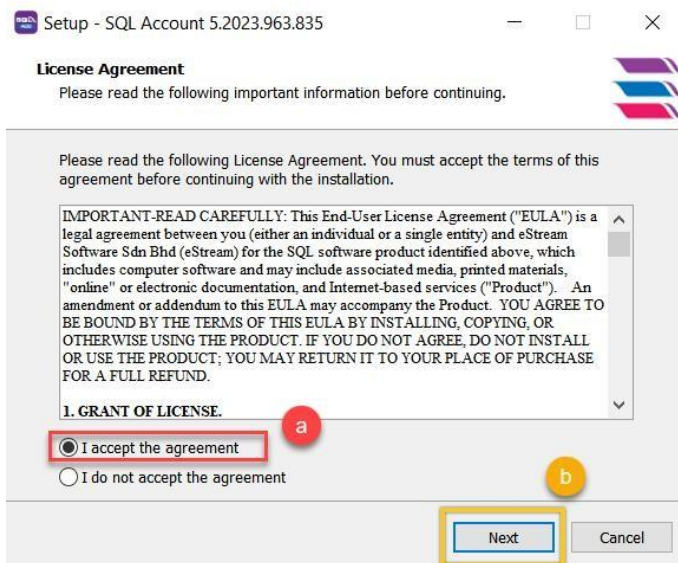
1. Double Click Setup File to install



2. Click on

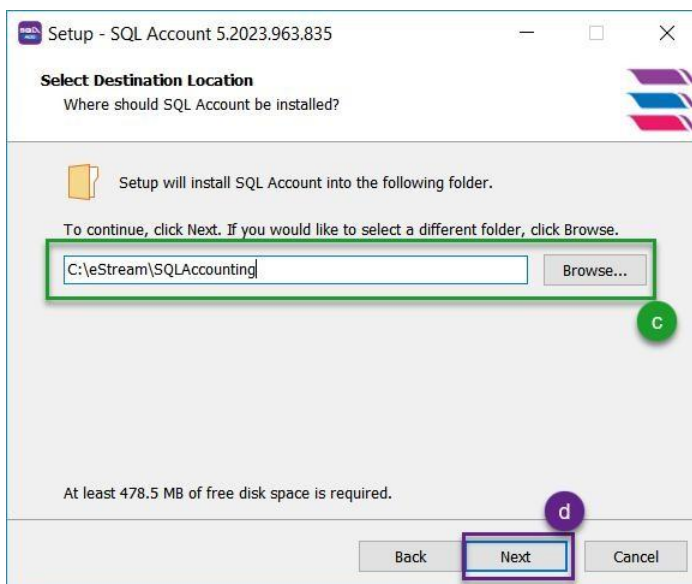
a. I accept the agreement

b. Next



c. Make sure your path is C:\eStream\SQLAccounting

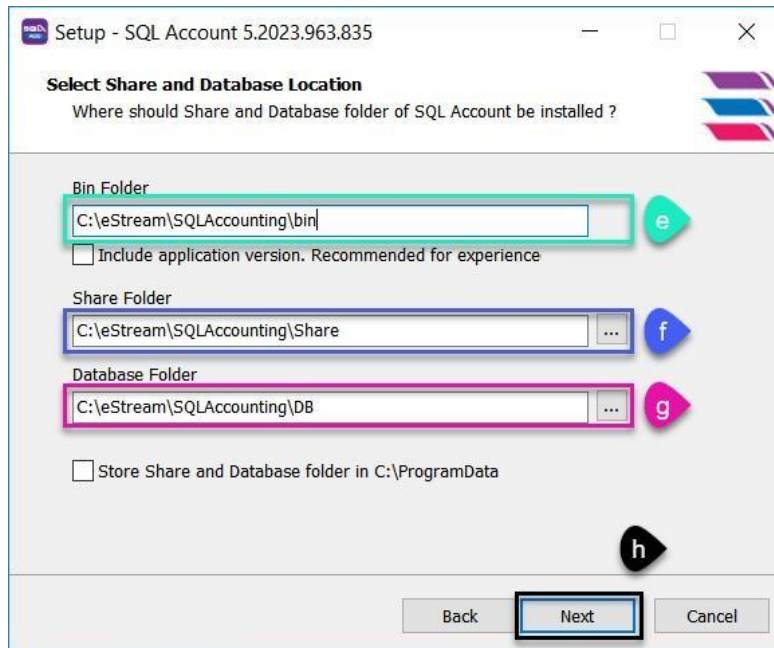
d. Click Next



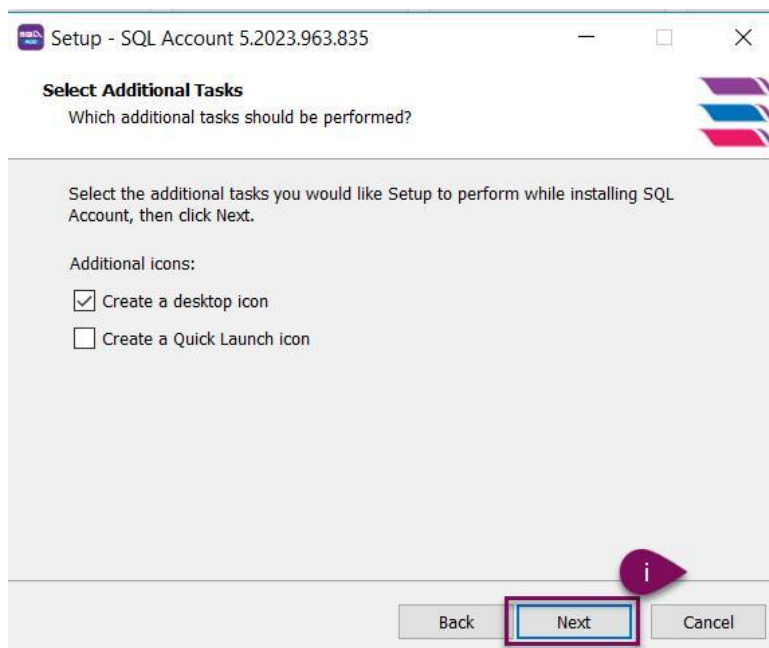
- e. Make sure the folder at C:\eStream\SQLAccounting\bin
- f. Make sure the folder at C:\eStream\SQLAccounting\Share
- g. Make sure the folder at C:\eStream\SQLAccounting\DB

h. Please do not change the setting if all paths are the same as mentioned above, just click Next

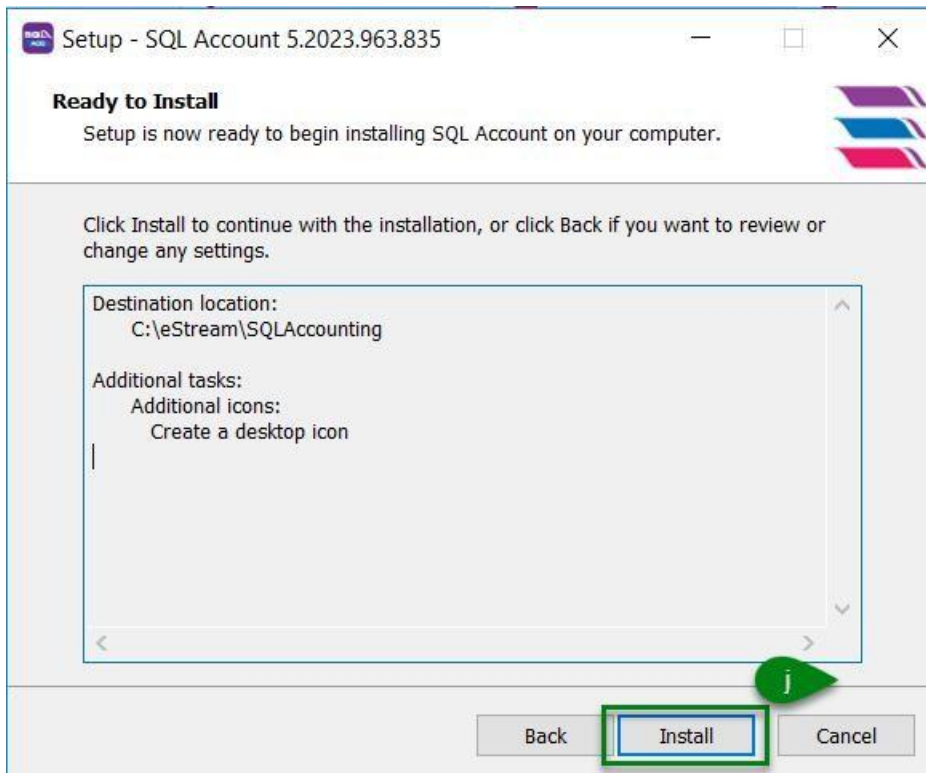
**** If the path showing in programData is incorrect (wrong), you will need to change it to be the same as e, f, g**



i. Don't change any setting , Click Next



j. Click Install



3. Click evaluation (system will auto create a testing company)

